



**2026**

**Tilenow**

**In stock for immediate delivery**

**Porcelain Tiles**

**Tivoli Collection**



**DESIGNER TILE AND STONE USA**

**95 Newfield Avenue | Edison New Jersey 08837**

**Phone: 732-225-1877 | Fax: 732-225-0660**

**[www.designertilestone.com](http://www.designertilestone.com)**



## Designer Tile and Stone USA

Designer Tile and Stone is one of the largest worldwide wholesale suppliers of the following types of tiles natural stone, quartz, ceramic, glass, porcelain, leather, mosaic and quarry tile, granite and quartz vanity tops, wood vanity bases serving auto, commercial, national retail, hospitality and high quality indoor and outdoor projects.

Our years of knowledge and experience meet and exceed the standards of the world's finest Architects, Interior Designers and Largest Developers.

With worldwide resources, Designer Tile and Stone supply a wide range of common and rare stones and tile products for a variety of projects. We also supply quartz & granite countertops cut to size for large commercial projects. Our factories have the capabilities of producing billions of square feet of stone and tile and deliver it to the marketplace.

With our ability to intricately cut to any size, thickness, and finish your project requires, you have all the choices you want and all the control you need.

Our friendly and skilled team of dedicated and professional sales, estimators, and import specialists will answer all your questions and follow your project from specification to delivery and installation.

**Designer Tile and Stone** supplies materials to the following  
**commercial, hospitality and national retail markets:**

Auto, Airports, Restaurants, Hotels and Casinos Office Buildings,  
Department and Chain Stores, Museums, Libraries, and Schools  
Theaters and Malls, Tunnels, Multiple Family, Apartments and Condominiums

### Supplier to major hotel brands as follows



# WILBUR SERIES



Wilbur White/ Light Grey



Wilbur White/ Gold

**Stone look porcelain tile sizes:** 12" x 24", 24" x 24", 24" x 48"

**Finish:** Polished, Matte

**Application:** Floors, Walls

## **TECHNICAL DATA FOR MATTE FINISH ONLY:**

CHARACTERISTICS	RESULTS
DCOF	≥0.42 Matte Only
Breaking Strength	≥425 lbs
MOHs	7
Water Absorption	<0.5%
Chemical Resistance	Class A
Abrasion Resistance	Class III

# INTEGRITY SERIES



Sand



Light Grey



Dark Grey

**Stone look porcelain tile sizes:** 12" x 24", 24" x 24", 24" x 48"

**Finish:** Lappato, Matte

**Application:** Floors, Walls

## TECHNICAL DATA FOR MATTE FINISH ONLY:

CHARACTERISTICS	RESULTS
DCOF	≥0.42 Matte Only
Breaking Strength	≥425 lbs
MOHs	7
Water Absorption	<0.5%
Chemical Resistance	Class A
Abrasion Resistance	Class IV

# ANZIO SERIES



White



Beige



Light Grey

**Stone look porcelain tile sizes: 12" x 24"**

**Finish: Matte**

**Application: Floors, Walls**

## **TECHNICAL DATA :**

CHARACTERISTICS	RESULTS
DCOF	≥0.42 Matte Only
Breaking Strength	≥325 lbs
MOHs	1-5
Water Absorption	≤0.5%
Chemical Resistance	Class A
Abrasion Resistance	Class IV

# CROTON SERIES



White



Beige



Grey



White



Beige



Grey

**Travertine look porcelain tile sizes:**

**All colors:** 12" x 24", 2" x 2" Mosaic

**Finish:** Matte

**Application:** Floors, Walls

**TECHNICAL DATA**

CHARACTERISTICS	RESULTS
DCOF	≥0.42
Breaking Strength	≥300 lbs
MOHs	≥7
Water Absorption	<0.5%
Chemical Resistance	Class A
Abrasion Resistance	Class III



# CARPI SERIES



White



Beige



Light Grey



White



Beige



Light Grey

**Stone look porcelain tile sizes:**  
**All colors:** 12" x 24", 2" x 2" Mosaic  
**Finish:** Matte  
**Application:** Floors, Walls

## TECHNICAL DATA

CHARACTERISTICS	RESULTS
DCOF	≥0.42
Breaking Strength	≥300 lbs
MOHs	≥7
Water Absorption	<0.5%
Chemical Resistance	Class A
Abrasion Resistance	Class III



# HAYSVILLE SERIES



White



Grey



White



Grey

**Porcelain tile sizes:** 12" x 24", 2" x 2" mosaic

**Finish:** Matte

**Application:** Floors, Walls

## TECHNICAL DATA

CHARACTERISTICS	RESULTS
DCOF	≥0.42
Breaking Strength	≥300 lbs
MOHs	≥ 7.0
Water Absorption	<0.5%
Chemical Resistance	Class A
Abrasion Resistance	Class III

# ABILENE SERIES



White



Taupe



White



Taupe

**Travertine look porcelain tile sizes:** 12" x 24", 2" x 2" mosaic

**Finish:** Matte, Polished

**Application:** Floors, Walls

**TECHNICAL DATA FOR MATTE FINISH ONLY:**

CHARACTERISTICS	RESULTS
DCOF	≥0.42 - Matte Only
Breaking Strength	≥325 lbs
MOHs	7.0 - Matte Only
Water Absorption	<0.5%
Chemical Resistance	Class A
Abrasion Resistance	Class IV

# TIVOLI SERIES



Beige



Grey



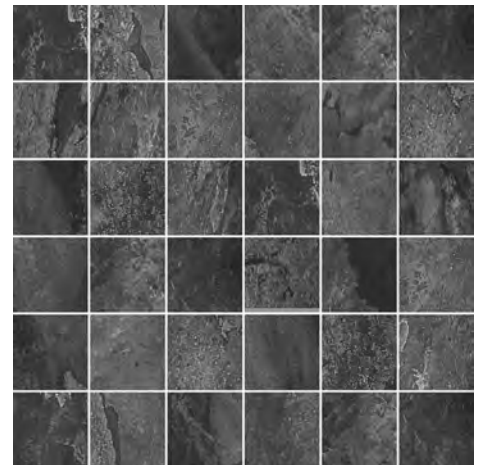
Charcoal



Beige



Grey



Charcoal

**Slate look porcelain tile sizes:**

**All colors:** 12" x 24", 2" x 2" mosaic

**Finish:** Matte

**Application:** Floors, Walls

**TECHNICAL DATA**

CHARACTERISTICS	RESULTS
DCOF	≥0.42
Breaking Strength	>275 lbs
MOHs	≥7
Water Absorption	<0.5%
Chemical Resistance	Class A

# GELA SERIES



Cream



Taupe



Natural



Walnut

**Wood look porcelain tile size:**

**All colors:** 6" x 36"

**Finish:** Matte

**Application:** Floors, Walls

TECHNICAL DATA	
CHARACTERISTICS	RESULTS
DCOF	≥0.42
Breaking Strength	>275 lbs
MOHs	7
Water Absorption	<0.5%
Chemical Resistance	Class A

# COMO SERIES



White



Grey



Brown



Midnight

**Wood look porcelain tile size:**

**All colors:** 6" x 36"

**Finish:** Matte

**Application:** Floors, Walls

TECHNICAL DATA	
CHARACTERISTICS	RESULTS
DCOF	≥0.42
Breaking Strength	≥ 300 lbs.
MOHs	≥7
Water Absorption	<0.5%
Chemical Resistance	Class A





White



Beige



Grey



Brown

**Wood look porcelain tile size:**

**All colors:** 6" x 36"

**Finish:** Matte

**Application:** Floors, Walls

TECHNICAL DATA	
CHARACTERISTICS	RESULTS
DCOF	≥0.42
Breaking Strength	≥ 300 lbs.
MOHs	≥7
Water Absorption	<0.5%
Chemical Resistance	Class A





## **DESIGNER TILE AND STONE USA**

**95 Newfield Avenue  
Edison New Jersey 08837  
Phone: 732-225-1877  
Fax: 732-225-0660  
Toll Free: 877-959-TILE  
[www.designertilestone.com](http://www.designertilestone.com)**